



## HT730 -4" Rugged Handheld Terminal

Large Keypad | Superior 2D scanning performance | WiFi6 | 2X2 MU-MIMO | 6700mAh hot swappable battery.

### Ergonomic large keypad design for one-handed operation.

The HT730 features a 4-inch vivid bright (400nits) display, for easy viewing in both indoors and outdoors environments. This device comes standard with a large-size 38-key keypad with backlight design as well as scanning buttons on each side of the device for instinctive data entry and barcode capturing. Equipped with special silicon materials and key printing underneath the keys it provides keypad durability and the reliability to 2.5 million lifetime clicks for long term abrasion protection.

**The HT730 handheld terminal offers the perfect balance of ruggedness along with high-end features, optimized for warehouse, field service, logistics and distribution environments.**

### Wireless communication performance boost

The HT730 boosts the wireless performance as it supports 2x2 MU-MIMO antennas. With the integrated 4G dual-SIM slots, it provides double signal coverage and real-time communications.

### Superior imaging technology

The HT730 is a barcode powerhouse. This device integrates a powerful megapixel 2D scan engine with a 30-degree scanning tilt down design (with focus aimer) to increase productivity and efficiency where intensive barcode scanning takes place. The HT730 supports 1D, 2D, Dot Code and OCR symbologies and is able to read poorly printed and damaged barcodes. It can boost the scanning performance at a speed of 60fps and delivers motion tolerance of up to 5m/s. This motion tolerance pays off in hand-held scanning, where you can quickly and effortlessly move from one barcode to the next. In addition, fitted with a 13MP camera, operators and drivers can use this option as proof of delivery, to take and attach photos in the event of any issues with goods or shipments. The 2D imager and camera are aligned and share the same field of view, meaning you can scan a barcode and capture an image at the same time - an ideal solution for applications such as delivery processing.

### Durable design

Designed for harsh environments, HT730 features a rugged and durable design. This device is sealed against environmental water and dust by IP65 / IP67 rating, and it can withstand a 1.8m drop to concrete without bumper and a 2.4m drop with bumper.

### Hot swappable battery for less downtime

With a long-lasting 6700mAH removable battery, it supports the HT730 with 20-26 hours of battery life and with the hot swap technology, workers can easily change the HT730 battery without interruption / rebooting the device (within 1 minute) - less downtime and enhancing productivity while keeping applications active!

### Flexibility

The HT730 provides various options to perfect your workflow.

- The HT730 has optional accessories from hand-strap, single slot charging cradle to advanced multi-4-slot cradle and many more to enhance the ease of use.
- Besides the standard HT730 version (including a standard 2D reader) the HT730 will also soon be available with integrated 2D long-range (reads up to 20m\*) version and UHF/RFID with 2D reader version. These models are specially designed to increase power and comfort – The ideal solution for heavy-duty inventory management and tracking.

### Features

- Android 10 (upgradable to Android 12) OS with GMS certified
- Superior 2D scanning performance:
  - **Standard version:** Support 30-degree scanning tilt down
  - **Long range version:** Supports 20m\* reading distance
- Durable keypad: 38-key/29-key with 2.5 million lifetime clicks and key printing on the back of the keys
- Keypad with backlight design
- Ergonomic one-handed operation
- Support Bluetooth® 5.1
- Support IEEE 802.11a/b/g/n, 802.11ax-ready, 802.11ac Wave 2 with 2X2 MU-MIMO WLAN Standard
- 6700mAh battery for 20-26 hours operation\*\*
- Hot swap battery design - without downtime
- 1.8m drop-resistant housing (2.4m with bumper)
- IP65/IP67 protection against water and dust
- Supports Unitech Orchestra Mobility Solutions & Unitech Utilities
- Supports: MoboLink, SOTI, 42Gears, AirWatch, Ivanti Wavelink, VMware and StayLinked.

\*Reading distance depends on barcode type and density.

\*\*Battery life depends on type of operation and environment.



### Operation System

OS	Android 10 (upgradable to Android 12)
GMS certified	YES
CPU	Qcta-core 2.3 GHz <b>AI Engine - Qualcomm 720G</b> (SM7125) Support 2.2 TOPS (2.2 trillion operations per second)
Memory	4GB <b>DDR4</b> RAM / 64GB Flash Flash memory storage
Language support	Multi-language

### Display

Screen Size	4" TFT-LCD WVGA (480x800) color screen (400 nits)
Touch panel	Ultra-sensitive capacitive touch screen, compatible with gloves and supports wet resistance.

### Keypad

Function Numeric (38 keys) / Numeric (29 keys) with backlight.  
Hard silicon material with key printing underneath the keys.  
Side SCAN button x 2 (Left / Right)

### Camera/Photos/Video/Audio

Rear 13 MP Autofocus with flash

### Indicator

LED, Speaker, Vibrator

### Symbologies

<b>Engine:</b>	N6703 imager or N3603 imager, depending on key-configuration
<b>1D codes:</b>	UPC/EAN/JAN, GS1 DataBar, Code 39, Code 128, Code 32, Code 93, Codabar/ NW7, Interleaved 2 of 5, Matrix 2 of 5, MSI, Trioptic
<b>2D codes:</b>	PDF417, MicroPDF417, GS1 Composite, Code11, Aztec Code, Data Matrix, QR Code, Micro QR Code, MaxiCode, Han Xin Code, <b>DOT Code</b> .
	<b>Postal:</b> Intelligent Mail Barcode, Postal-4i, Australian Post, Japanese Post, Netherlands (KIX) Post, Postnet, Planet Code
	<b>OCR:</b> OCR-A, OCR-B, E13B (MICR)
<b>HF (RFID)</b>	Support HF/NFC Frequency 13.56Mhz Support: ISO14443A/B, ISO15693 standard

**Long-range:** (optional)  
Only available for Long Range reading version.  
EX30 - Extra Long range 2D imager.  
Reading distance up to 20m\*.  
\*Reading distance depends on barcode type and density.

**UHF reading:** (optional)  
Only available for UHF/RFID reading version.  
UHF/Reader with 2D imager.  
Reads up to 6m\*.  
\*Reading distance depends on barcode type and density.

### Power Source

Main Battery	Main battery 3.7V 6700mAh
Hot Swap battery	Keeps applications active up to 1 minute
RTC battery	Yes
Operating time	20-26 hours*

\*Depending on type of operation and environment.

### Audio

2W output ,105 dB at 10cm, Dual-Microphone, support noise cancellation.

### Enclosure:

Dimension	195 mm x 72 mm x 34 mm
Weight	395g (with battery)

### Communication

USB	USB 3.1 (type-C) support USB OTG Supports Display Port Mode Ethernet/USB-Host via cradle
Quick charge	over USB charging over cradle* charging *quick charge supported over cradle via pogo pin connectors)
OTG	Yes, over USB Type-C
POGO PIN	Custom IO connector (include USB Host)
WLAN	802.11a/b/g/n, 802.11ax-ready, 802.11ac Wave 2 (Dual Antenna, <b>MU-MIMO</b> 2X2 support)
Bluetooth®	Bluetooth® 5.1
WWAN ( <b>optional</b> )	LTE Advanced Support Up to CAT4 LTE downlink 300Mbps/uplink 100Mbps LTE (FDD) – Bands 1, 2, 3, 4, 5, 7, 8, 17, 20, 28 LTE (TDD) – Bands 38, 39, 40, 41 UMTS/HSPA+ (3G) – Bands 1, 2, 5, 8 GSM/GPRS/EDGE Quad-Band (850/900/1800/1900 MHz)
GPS	GPS, GLONASS, Galileo, BeiDou
Sensors	Gyroscope, G-sensor, E-compass, Light & Proximity Sensor
SIM Slot	Nano SIM Slot x 2
Expansion Slot	Micro SD/TF x 1(Support SD, SDHC and SDXC)

### User Environment

Operating Temp.	-20 ~ +50°C
Storage Temp.	-30 ~ 70°C (without battery)
Charging Temp.	0°C to 45°C
Humidity	5% ~ 95% (non-condensing)
Drop Specification	1.8 m / 2.4 m (with Bumper)
Sealing	IP65 / IP67

### Regulatory Approvals

CE, FCC, NCC, IC, VCCI, TELEC, CCC, SRRC, RoHS, CEC, BQB, GMS, N-Mark

### Software

Unitech Orchestra Mobility Solution, MoboLink SOTI, 42Gears, AirWatch, Ivanti Wavelink, VMware and StayLinked.



With Unitech Mobility Orchestra we bring four key elements together to turn a standard device into an enterprise managed work tool that composes of: 12Solutions, StageGo, UnitCare and MoboLink. Facilitate the management of your hardware investment with MoboLink **Visibility** or **Standard** version.

### Accessories

- USB Type C cable
- Single Slot Charging cradle
- Single Slot Ethernet cradle with USB host
- Single slot with VGA out
- 4-Slot Charging cradle
- 4-Slot Ethernet cradle
- 4-Slot battery charger
- Hand strap
- Pistol grip
- Stylus with coil strap
- Battery
- Glass Screen Protector
- Power adapter for cradle
- Power adapter for USB
- 3-pin power cord



### Unitech Europe

Tilburg, The Netherlands • Tel.: +31 (0)13 460 9292 • Email: [Info@eu.ute.com](mailto:Info@eu.ute.com) • Website: <https://eu.ute.com>. Specifications are subjected to change without notice.

Specifications subject to change without notice. Copyright 2021 Unitech Electronics Co., Ltd. All rights reserved. Unitech is a registered trademark of Unitech Electronics Co., Ltd. All product and company names are trademarks, service marks, or registered trademarks of their respective owners.



# HT730 Highlights

## EN version v1.1 HT730 Specifications

### Configuration:



With bumper  
2.4m  
drop-resistant

Without bumper  
1.8m  
drop-resistant



Function Numeric  
38-key

Numeric  
29-key

### Durable keypad design.



Keypad with backlight design. Durable keypad with 2.5 million lifetime clicks. Hard silicon material with key printing underneath keys.

### Data collection versions



Standard version  
N6703 imager or N3603  
imager, depending on  
key-configuration.



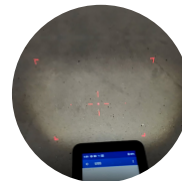
Long range version  
EX30 Near-Far imager  
20m reading distance\*.



UHF/RIFD version  
with 2D imager.

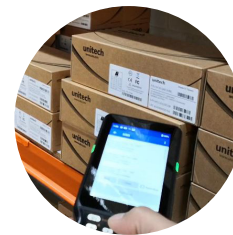
### Imager and camera

30-degree\*\*  
scanning  
tilt down



White illumination and high  
visibility red laser aimer.

The 2D (30-degree tilt down) imager and camera are aligned and share the same field of view, meaning you can scan a barcode and capture an image at the same time.



### Hot-swap battery design



Easily change the HT730 battery without interruption / rebooting the device. Reboot within 1 minute - screen will automatically start the countdown.

\*Reading distance depends on barcode type and density.  
\*\*30degree tilt down, only applicable on standard version.

## Unitech Mobility Orchestra



### Unitech Mobility Orchestra

Unitech Mobility Orchestra Solution guarantees the usability of the delivered products and takes care of the traceability during the lifetime of the product in use. It aims to empower usability, traceability and sustainability to safeguard user's investment with Unitech mobility devices from birth to retirement. It includes 4 components: 12Solutions, StageGo, UnitCare and Mobolink Visibility.



#### 12Solutions

12Solutions provides a suit of great tools that enhances user experience and management needs that turns a standard device into an enterprise work tool.

#### UnitCare

UnitCare protects your investment of installed devices in the field to be served at best quality. Enjoy enhanced investment protection and a low total cost of ownership.

## Development Tool



### Unitech API

Unitech system level application programming interface.

### Third party EMMs

Unitech third party EMMs supported.



## Staging and Management



### MoboLink

Android Enterprise ready EMM for monitoring device health and managing apps, configs and files.



### StageGo

Barcode-based device staging utility offering hundreds of script commands for you to work with.



### OEMConfig

If you are using a third party EMM, OEMConfig will allow those EMM solutions to configure Unitech specific settings on the device.



### Enterprise Launcher

Secure your devices by kiosk them with Enterprise Launcher. Block access to the Android system and only allow limited number of apps to be run.



### Battery info

Monitor advanced battery health and manage the battery replacement cycle. Use with MoboLink to get real-time battery health alerts delivered to your phone.



### Software Update

Check and install software updates online. To let a device always stay up-to-date, setup the device to automatically check and install for updates on boot up.



### System Update Center

Check and install firmware updates via FOTA. You can update the firmware via online FOTA server, or by using a OTA ZIP file placed in the internal storage.



### App Update Center

APKs installed with App Update Center can remain intact even after factory reset.

## Productivity and Utilities



### File Manager

Manage files and folders on all the internal and external storage locations.



### UNote

A simple text viewer and editor for use in your workflows.



### Startup

Auto-run apps when device boots.



### KeyRemap

Reprogram physical buttons to act as another key or to launch an app.



### Ivanti Velocity

Android Terminal Emulator from Ivanti giving your workers the right tools to be more productive.



### NTP Server Settings

Customize the NTP server setting to keep your device date and time synchronized.



### WLAN Advanced

Configure advanced WiFi parameters.

## Unitech Europe